

# GLOBAL HUMANITARIAN MISSION

## PROJECT PROPOSAL SAN SEBASTIAN COMMUNITY DEVELOPMENT



**San Sebastián, Comayagua  
HONDURAS**

# Overview

Bordering Guatemala, El Salvador and Nicaragua, Honduras is one of the poorest Spanish-speaking countries in the Western Hemisphere. Nearly 65% of Honduras' population of approximately 9 million people live in poverty.

The poverty index continues to increase every year, according to INE, reaching 74 percent on average in 2022, and 79 percent in rural areas. The country has not been able to recover from the COVID-19 pandemic, followed by hurricanes Eta and Iota in 2020.

Honduras has the highest income inequality of all of Latin America. Approximately 9.4% of the 9.2 million people in the country are unemployed. Almost 49 percent of the Honduran population lives below the poverty line, existing on less than \$2 per day.

Unfortunately, this set of circumstances was only exacerbated by the onset of COVID-19, followed by hurricanes Eta and Iota, which left widespread devastating effects, and the country has not been able to rebound since.

**San Sebastián** is a small impoverished town that was originally inhabited by the indigenous Lenca population. It is located in the west central state of Comayagua, where the population is around 3,600.

Families mostly support themselves by growing corn and beans, or raising cattle. Others depend on seasonal labor on local coffee plantations, as well as informal trade. Approximately 20% of Honduras' general economy is dependent on remittances sent by Hondurans abroad.

Local non-profit organization, **CEPUDO**, collaborates with international organizations to work with communities in Honduras, assisting families to overcome conditions of extreme poverty.

**CEPUDO** has been instrumental in establishing fully developed communities, strengthening a spirit of solidarity and self-sustainability through donated material goods, development of productive projects, training and technical assistance.

The Organization is conducting social economic surveys in San Sebastián, and based on these results, will identify **30** families determined to be most in need.

**CEPUDO** has reached out to **GLOBAL HUMANITARIAN MISSION**, seeking help for this community.





# Where They Are



Coordinates: 14.2440° N, 87.6396° W

# Project Snapshot

**Global Humanitarian Mission's** vision is to bring the love of Christ and a Mission of Mercy, as we serve the desperately poor.

**San Sebastian Community Development** is being established in response to **CEPUDO's** urgent call for help, and to address the overwhelming needs in the San Sebastian community.

The proposed project will be developed on land already donated to the community, and will represent a new dignified lifestyle for up to **100** destitute families.

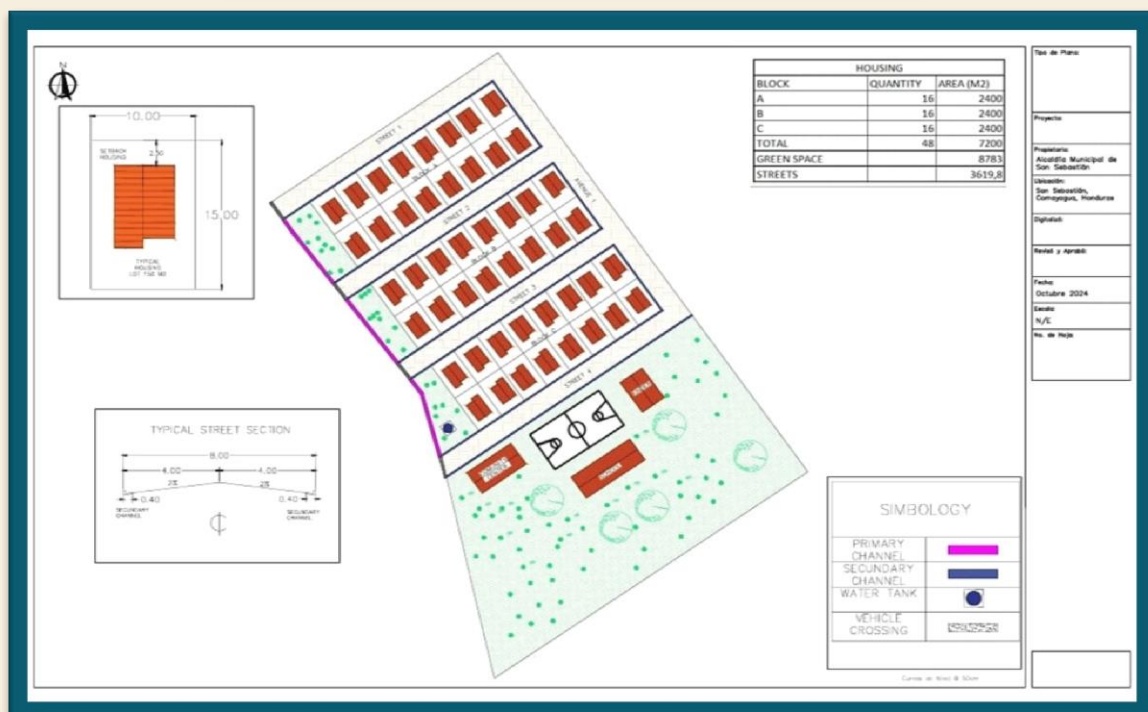
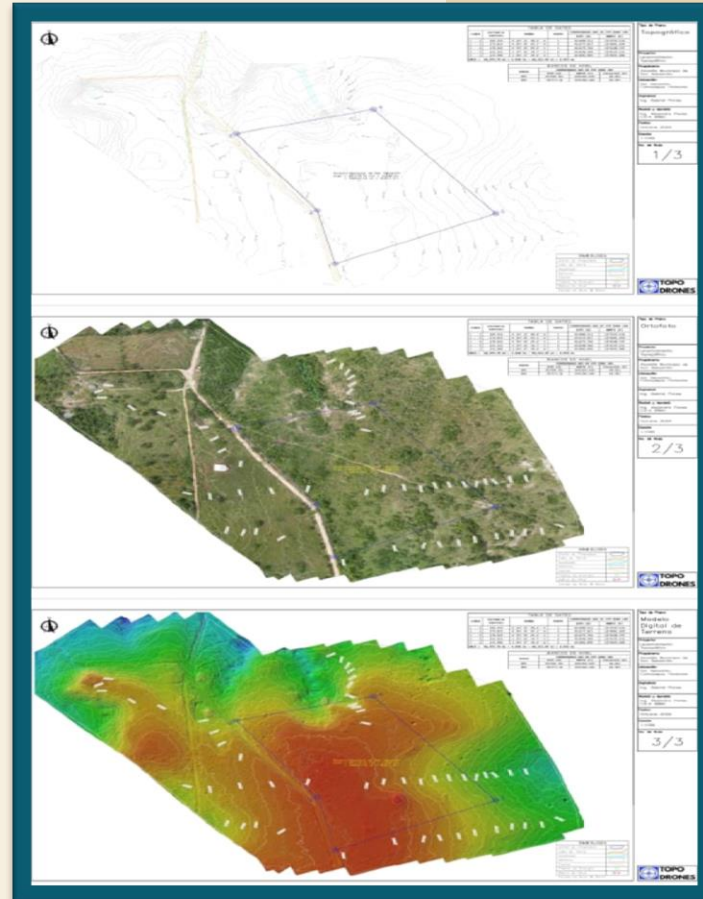
This comprehensive approach to community development will be completed in phases, beginning with the first phase for **30** families outlined below:

## Phase I

- Land leveling and preparation
- Construction of **30** houses, including:
  - 2 Bedrooms
  - Bathroom with running water and flushable toilet
  - Eco-stove
  - Household furnishings
- Water
  - Main water conduction lines (with valves and accessories), with two exits, directing water from the community stream to the existing water conduction line, as well as to the community. (This is located in an adjoining protected area, and maintained by these communities.)
  - Construction of a 5,000-gallon water storage tank.
- Wastewater system with treatment plant.
- Rain-collecting ditches.
- Electricity installations
- 1 Community center
- Workshops for social development

**TOTAL COST: \$1,200,000.00**

# Topographical Survey/ Floor Plan





# From Global Humanitarian Mission

This project will create a major life-change for 30 low-income families with no resources, who are living under severe conditions. They will be able to live in brand new secure hygienic homes with indoor plumbing, and a front door that actually locks.

They will be able to grow their children in a nurturing lifestyle that they themselves did not have, and this will lay the foundation for a more successful future.

*This is a dream come true for families who never dared to dream.  
You can make this a reality and give them reason to hope for a brighter future!*

*San Sebastian community development will take place on this donated land.*



*“See, I am doing a new thing! Now it springs up; do you not perceive it?  
I am making a way in the wilderness and streams in the wasteland.” Isaiah 43:19*

Global Humanitarian Mission, a 501(c)(3) organization, is comprised of a compassionate and committed team with over thirty years' experience working in international relief and development around the globe. Global Humanitarian Mission honors the intent of our donors. All proceeds are restricted for the specific project for which they are raised. If more funds are received than are required for a specific project, the additional funds will be used to meet the most urgent need.